

Фризеры для мягкого мороженого, кремов, йогуртов 44RMTFB, GEN-5400, GES-5400, GEN-5420, GES-5420, GEN-5099, GES-5099, SLX400C, SLX400E, SLX500, CS600

Технические характеристики

По вопросам продаж и поддержки обращайтесь:

Алматы (727)345-47-04
Ангарск (3955)60-70-56
Архангельск (8182)63-90-72
Астрахань (8512)99-46-04
Барнаул (3852)73-04-60
Белгород (4722)40-23-64
Благовещенск (4162)22-76-07
Брянск (4832)59-03-52
Владивосток (423)249-28-31
Владикавказ (8672)28-90-48
Владимир (4922)49-43-18
Волгоград (844)278-03-48
Вологда (8172)26-41-59
Воронеж (473)204-51-73
Екатеринбург (343)384-55-89

Иваново (4932)77-34-06
Ижевск (3412)26-03-58
Иркутск (395)279-98-46
Казань (843)206-01-48
Калининград (4012)72-03-81
Калуга (4842)92-23-67
Кемерово (3842)65-04-62
Киров (8332)68-02-04
Коломна (4966)23-41-49
Кострома (4942)77-07-48
Краснодар (861)203-40-90
Красноярск (391)204-63-61
Курск (4712)77-13-04
Курган (3522)50-90-47
Липецк (4742)52-20-81

Магнитогорск (3519)55-03-13
Москва (495)268-04-70
Мурманск (8152)59-64-93
Набережные Челны (8552)20-53-41
Нижний Новгород (831)429-08-12
Новокузнецк (3843)20-46-81
Ноябрьск (3496)41-32-12
Новосибирск (383)227-86-73
Омск (3812)21-46-40
Орел (4862)44-53-42
Оренбург (3532)37-68-04
Пенза (8412)22-31-16
Петрозаводск (8142)55-98-37
Псков (8112)59-10-37
Пермь (342)205-81-47

Ростов-на-Дону (863)308-18-15
Рязань (4912)46-61-64
Самара (846)206-03-16
Санкт-Петербург (812)309-46-40
Саратов (845)249-38-78
Севастополь (8692)22-31-93
Саранск (8342)22-96-24
Симферополь (3652)67-13-56
Смоленск (4812)29-41-54
Сочи (862)225-72-31
Ставрополь (8652)20-65-13
Сургут (3462)77-98-35
Сыктывкар (8212)25-95-17
Тамбов (4752)50-40-97
Тверь (4822)63-31-35

Тольятти (8482)63-91-07
Томск (3822)98-41-53
Тула (4872)33-79-87
Тюмень (3452)66-21-18
Ульяновск (8422)24-23-59
Улан-Удэ (3012)59-97-51
Уфа (347)229-48-12
Хабаровск (4212)92-98-04
Чебоксары (8352)28-53-07
Челябинск (351)202-03-61
Череповец (8202)49-02-64
Чита (3022)38-34-83
Якутск (4112)23-90-97
Ярославль (4852)69-52-93

Россия +7(495)268-04-70

Казахстан +7(727)345-47-04

Беларусь +(375)257-127-884

Узбекистан +998(71)205-18-59

Киргизия +996(312)96-26-47

эл.почта: eze@nt-rt.ru || сайт: <http://electrofreeze.nt-rt.ru/>



- TASTE THE DIFFERENCE -

MODEL SLX500

These slim line soft serve machines produce the best tasting gravity-fed frozen desserts...smooth, creamy and consistent yogurt, ice cream or sorbet! The 22" wide footprint allows for more units in a smaller space. The SLX500 is the perfect yogurt shop freezer and is great for adding flavors to ice cream shops, too! Great for QSRs, retirement villages and hospital cafeterias.

The Electro Freeze Advantage

- **Meets ADA Specifications** for self service applications
- **Innovative Solutions** providing the best product quality in the industry.
- **Precision dual Smart control monitors** temperature and Consistency to provide superior taste and quality.
- **Multi-function LED** display with manager smart tools.
- **Superior low temp refrigeration** system provides Best in class production and product quality
- **Compact design** with a small foot print.
- **Twist feature** will dispense two separate flavors or equal combinations of both.
- **Self-closing handles** eliminate waste
- **Patented auger** gently blends reducing agitation and maintaining product quality and consistency.
- **Durable polymer, long wearing nonreversible blades** offer lower maintenance costs and better product quality
- **Simple to operate and easy to clean**
- **Experience Tells** Electro Freeze has been manufacturing quality frozen treat machines since 1929. Superior engineering, product innovations, sturdy construction, quality craftsmanship and dependable performance are Electro Freeze hallmarks.
- **Superior Service Support** backed by a world-wide distributor network.

Soft Serve Freezer

Genesis Series™

featuring

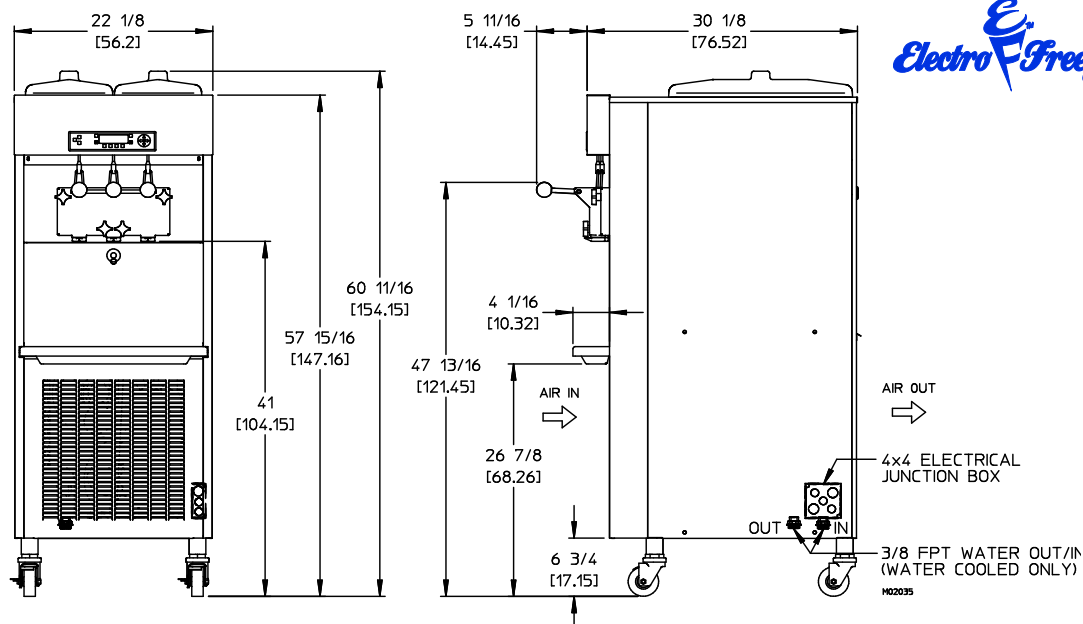


Virtual Quality
Management System™



**Let VQM help manage your frozen
dessert business more effectively.**

SLX500 Soft Serve Freezer



Electro Freeze®

MODEL SLX500

Due to continual product improvements all specifications are subject to change without notice.

Weights	lbs.	kgs.	
Crated	568	257	
	cu.ft.	cu.m.	
Volume	58.42	1.65	
Dimensions	in.	cm.	
Width	22-1/8	56.20	
Depth	30-1/8	76.52	
Height	60-11/16	154.15	
Electrical SLX500	Maximum Fuse Size	Minimum Circuit Ampacity	Poles (P) Wires (W)
208-230/60/1 Air	40	30	2P 2W
208-230/60/1 Water	40	29	2P 2W
208-230/60/3 Water	25	20	3P 3W
208-230/60/3 Air	25	20	3P 3W

Electrical characteristics other than above available on request from factory or local distributor. Check nameplate for exact electrical data.

Bidding Spec

Electrical: Volt _____ Hz _____ Ph _____
Cooling: _____ Neutral _____ Yes _____ No _____
Options: _____

Electrical

One dedicated electrical connection is required. Manufactured to be permanently connected. See electrical chart for the proper requirement. Consult your local electrical codes for cord and receptacle specifications.

Beater Motor

Two, 2 hp.

Refrigeration Systems

One, 11,000 Btuh. R404a.
Separate Hopper Refrigeration, One, 500 Btuh, R134a.
Btuh may vary depending on compressor used.

Air and Water Cooled

6" (15.2 cm) air space required on front & rear panel for proper air circulation and be open on the top.

Mix Hopper Capacity: two - 16 quarts (15 liters) each

Freezing Cylinder Capacity: two - 3.7 quarts (3.5 liters) each

Certified and/or listed by:



*UL listed and listed by Underwriters Laboratories under Canadian National Standard C22.2 No. 120-M91 (R2008)



- TASTE THE DIFFERENCE -

MODEL SLX400E

These slim line soft serve machines produce the best tasting highest quality frozen dessert. Offer your guests smooth creamy consistent yogurt, ice cream, custard or sorbet! The 22" wide footprint allows for more units in a smaller space. The perfect yogurt shop freezer is great for adding flavors to ice cream shops, too! Great for QSRs, retirement villages and hospital cafeterias.

The Electro Freeze Advantage

- **Innovative Solutions** providing the Best product quality in the industry.
- **Meets ADA Specifications** for self service applications
- **Precision dual Smart control** monitors Temperature and Consistency to provide superior taste and quality.
- **Multi-function LED display** with manager smart tools.
- **Superior low temp refrigeration** system provides Best in class production and product quality
- **Compact design** with a small foot print.
- **Twist feature** will dispense two separate flavors or equal combinations of both.
- **Self-closing handles** eliminate waste
- **Patented auger** gently blends reducing agitation and maintaining product quality and consistency.
- **Durable polymer**, long wearing nonreversible blades offer lower maintenance costs and better product quality
- **Simple to operate** and easy to clean
- **Experience Tells** Electro Freeze has been manufacturing quality frozen treat machines since 1929. Superior engineering, product innovations, sturdy construction, quality craftsmanship and dependable performance are Electro Freeze hallmarks.

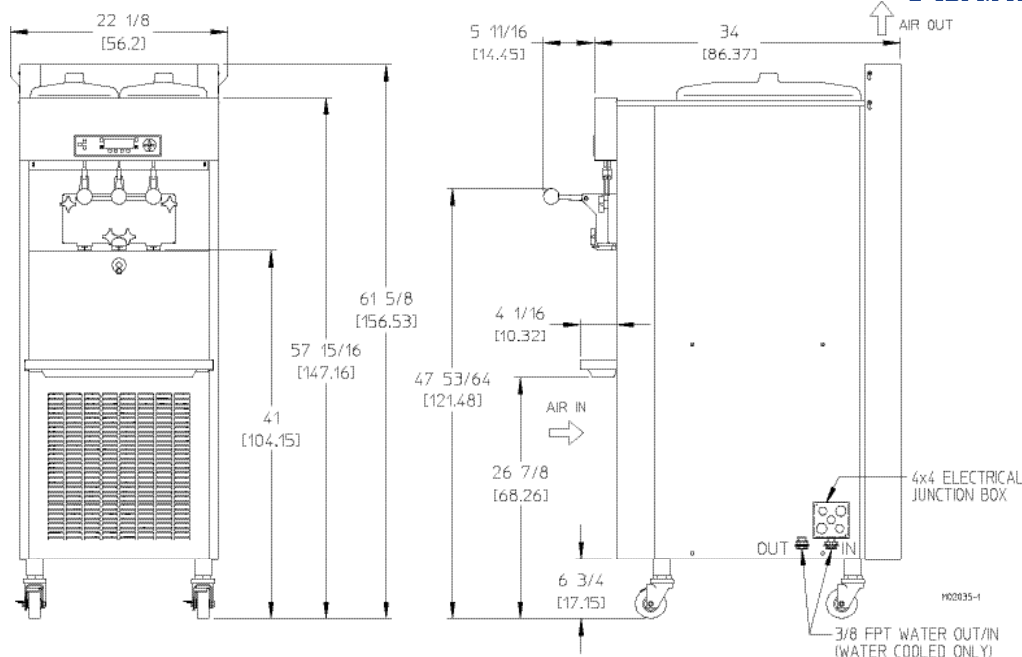
SOFT SERVE FREEZER GENESIS SERIES™ featuring


VQM™
Virtual Quality
Management System™



**Let VQM help manage your frozen
dessert business more effectively.**

SLX400E Soft Serve Freezer



MODEL SLX400E SPECIFICATIONS

Due to continual product improvements all specifications are subject to change without notice.

Weights	lbs.	kgs.
Net	470	213
Crated	568	257
	cu.ft.	cu.m.
Volume	58.42	1.65
Dimensions	in.	cm
Width	22-1/8	56.20
Depth	30-1/8	76.52
Height	60-11/16	154.15

Electrical	Total Amps	Maximum Fuse Size	NEMA Plug Type
208-230/60/1 Air	16	20	6-20P
208-230/60/1 Water	16	20	6-20P
	Total Amps	kW	Poles (P) Wires (W)
220-240/50/1 Air	15.0	3.1	2P 3W
220-240/50/1 Water	15.7	3.2	2P 3W

Electrical characteristics other than above available on request from factory or local distributor. Check nameplate for exact electrical data.

Bidding Spec

Electrical: Volt _____ Hz _____ Ph _____

Cooling: _____ Neutral _____ Yes _____ No

Options: _____

Electrical

One dedicated electrical connection is required. 60 Hertz units connects to a standard NEMA 6-20R receptacle. See electrical chart for the proper requirement. Consult your local electrical codes for cord and receptacle specifications.

Beater Motor

Two, 1 hp.

Refrigeration Systems

One, 6,900 Btuh. R404a.
Separate Hopper Refrigeration, One, 500 Btuh, R134a.
Btuh may vary depending on compressor used.

Air Cooled

6" (15.2 cm) air space required on rear panel for proper air circulation and be open on the top.

Mix Hopper Capacity: two - 12 quarts (11.4 liters) each

Freezing Cylinder Capacity: two - 2.7 quarts (2.6 liters) each

Certified and/or listed by:



*UL listed and listed by Underwriters Laboratories under Canadian National Standard C22.2 No. 120-13

**Selected voltages only. Contact H.C. Duke to verify agency needs.



- TASTE THE DIFFERENCE -

MODEL SLX400C

Features the Genesis Series™ with the Virtual Quality Management System™ to streamline your business. Offer your guests a smooth creamy consistent yogurt, ice cream, custard or sorbet! The 22" wide footprint available as a counter model allows for more units in a smaller space. The perfect yogurt shop freezer is great for adding flavors to ice cream shops, too! Great for QSRs, retirement villages and hospital cafeterias.

The Electro Freeze Advantage

- **Virtual Quality Management System™** monitors Temperature and Consistency to provide superior taste and quality.
- **Multi-function LED display** with manager smart tools.
- **Innovative Solutions** providing the best product quality in the industry.
- **Meets ADA Specifications** for self service applications
- **Self-closing handles** eliminate waste
- **Patented auger** gently blends reducing agitation and maintaining product quality and consistency.
- **Simple to operate** and easy to clean
- **Experience Tells** Electro Freeze has been manufacturing quality frozen treat machines since 1929. Superior engineering, product innovations, sturdy construction, quality craftsmanship and dependable performance are Electro Freeze hallmarks.
- **Superior Service Support** backed by a world-wide distributor network.

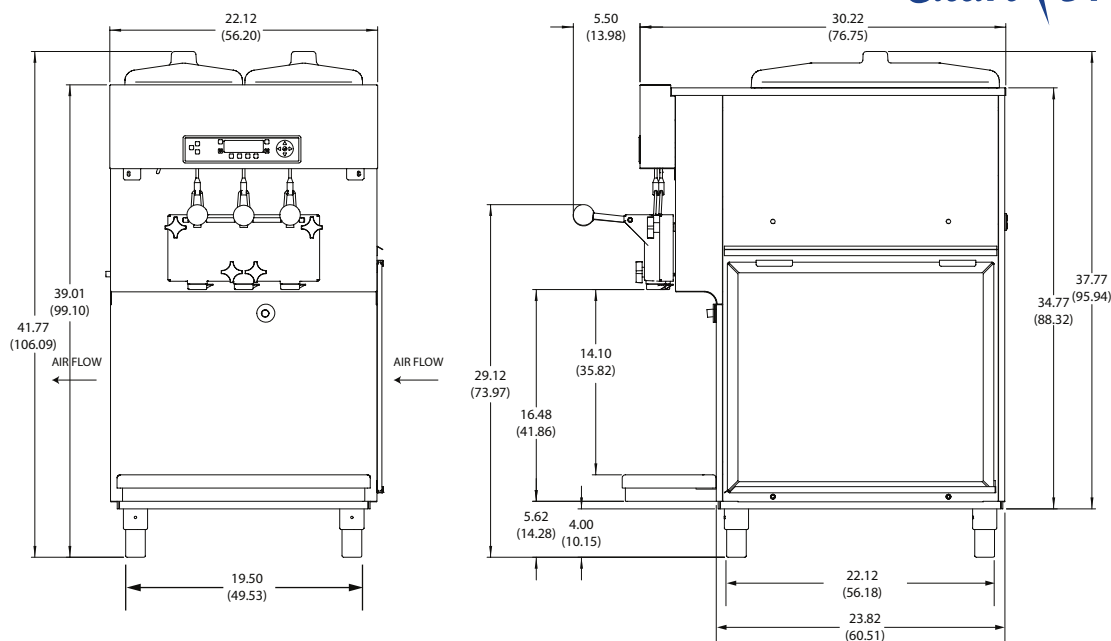
SOFT SERVE FREEZER GENESIS SERIES™ featuring


VQM™
Virtual Quality
Management System™



**Let VQM help manage your frozen
dessert business more effectively.**

SLX400C Soft Serve Freezer



MODEL SLX400C SPECIFICATIONS

Due to continual product improvements all specifications are subject to change without notice.

Weights	lbs.	kgs.
Net	420	190.5
Crated	500	226.79
	cu.ft.	cu.m.
Volume	15	.43
Dimensions	in.	cm
Width	22-1/8	56.20
Depth	30-1/8	76.52
Height	37-11/16	95.73
Electrical	Maximum Fuse Size	NEMA Plug Type
208-230/60/1 Air	20	6-20P
	Total Amps	kW
220-240/50/1 Air	15.7	3.2
	Poles (P)	Wires (W)
	2P	3W

Electrical characteristics other than above available on request from factory or local distributor. Check nameplate for exact electrical data.

Bidding Spec

Electrical: Volt _____ Hz _____ Ph _____

Cooling: _____ Neutral _____ Yes _____ No

Options: _____

Electrical

One dedicated electrical connection is required. See electrical chart for the proper requirement. Consult your local electrical codes for cord and receptacle specifications.

Beater Motor

Two, 1 hp.

Refrigeration Systems

One, 6,900 Btuh. R404a.
Btuh may vary depending on compressor used.

Air Cooled

6" (15.2 cm) air space required on both sides for proper air circulation and be open on the top.

Mix Hopper Capacity: two - 12 quarts (11.4 liters) each

Freezing Cylinder Capacity: two - 2.7 quarts (2.6 liters) each

Certified and/or listed by:



*UL listed and listed by Underwriters Laboratories under Canadian National Standard C22.2 No. 120-13



~ Taste the Difference ~

GES-5420

This extreme production soft serve freezer has two separate dispensing heads, allowing multiple crew members to dispense product at the same time. Electro Freeze™ pressurized freezers are ideal for high fat mixes and will serve a smooth, creamy product consistently and reliably.



Multi-function LED Display
with manager smart tools.

Virtual Quality Management System™
monitors Temperature and Consistency to
provide superior taste and quality.

Pump Forward Design

New pump forward design reduces
maintenance and cleaning time.



Optional Sliding Tray Mix Storage

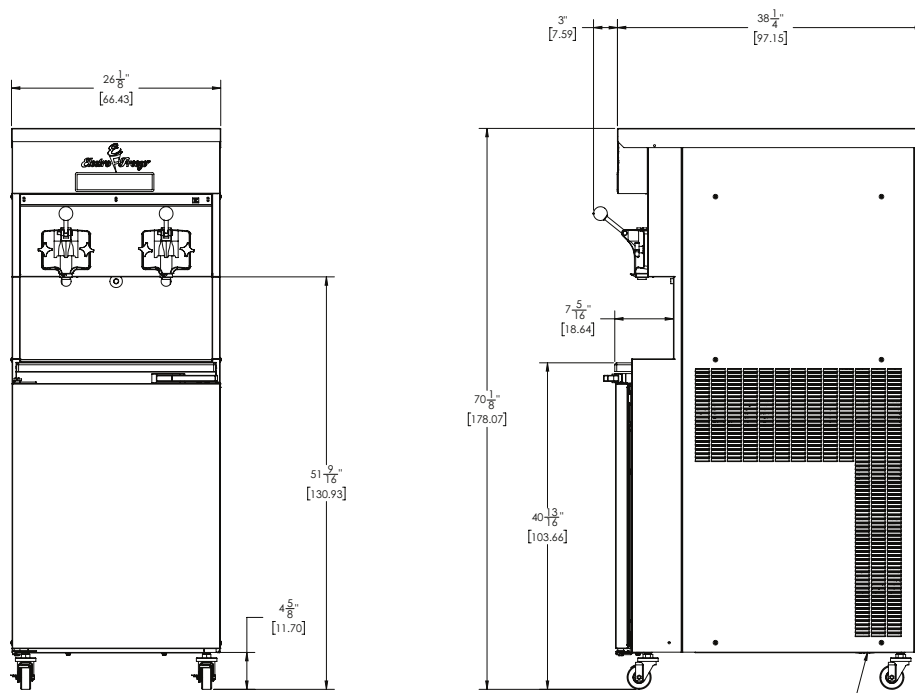
Mix tray slides out with mix containers in place
which makes adding mix quicker and easier.



Self Closing Spigots
prevents the mess and
eliminates waste

**Scroll Compressor
Technology**
provides increased
capacity, reliability and
efficiency.

GES-5420 Soft Serve Freezer



MODEL GES-5420 SPECIFICATIONS

Due to continual product improvements all specifications are subject to change without notice.

Weights	lbs.	kgs.	
Net	847	384	
Crated	993	450	
	cu.ft.	cu.m.	
Volume	58.42	1.65	
Dimensions	in.	cm	
Width	26-3/16	66.52	
Depth	38-1/4	97.15	
Height	68-1/16	172.88	
Electrical	Maximum Fuse Size	Minimum Circuit Ampacity (Qty)	NEMA Plug Type
208-230/60/1 Air	35 (2)	29 (2)	2P, 2W
208-230/60/1 Water	35 (2)	27.5 (2)	2P, 2W
208-230/60/3 Air	25 (2)	20 (2)	3P, 3W
208-230/60/3 Water	25 (2)	19 (2)	3P, 3W

Electrical characteristics other than above available on request from factory or local distributor. Check nameplate for exact electrical data.

Bidding Spec

Electrical: Volt _____ Hz _____ Ph _____

Cooling: _____ Neutral _____ Yes _____ No

Options: _____

Electrical

Two dedicated electrical connections are required. Manufactured to be permanently connected. See electrical chart for the proper requirement. Consult your local electrical codes for cord and receptacle specifications.

Beater Motor

Two, 2hp.

Refrigeration Systems

Two, 19,000 Btuh. R404a.
Separate Cabinet Refrigeration, One, 1200 Btuh, R134a.
Btuh may vary depending on compressor used.

Air Cooled

For proper air circulation, unit requires 6" (15.2 cm) air space at rear panel or 6" side clearance with 1" back and 29" top clearance.

Mix Container Capacity: two - 26 quarts (24.6 liters) each

Freezing Cylinder Capacity: two - 5 quarts (4.7 liters) each

Certified and/or listed by:



*UL listed and listed by Underwriters Laboratories under Canadian National Standard C22.2 No. 120-13



~ Taste the Difference ~

GES-5400

This extreme-volume 2-flavor soft serve freezer is perfect for serving lots of product in a short amount of time! Features the GES-5400 Genesis Series™ with the Virtual Quality Management System™ to streamline your business. Includes a front-loading refrigerated cabinet with a high speed pump. Our pressurized machines consistently produce smooth and creamy high and low fat products like ice cream, custard, yogurt and sorbets. Excellent for full-menu ice cream and custard stores, sports arenas & stadiums.



Multi-function LED Display
with manager smart tools.

Virtual Quality Management System™
monitors Temperature and Consistency to
provide superior taste and quality.

Pump Forward Design

New pump forward design reduces
maintenance and cleaning time.



Optional Sliding Tray Mix Storage

Mix tray slides out with mix containers in place
which makes adding mix quicker and easier.

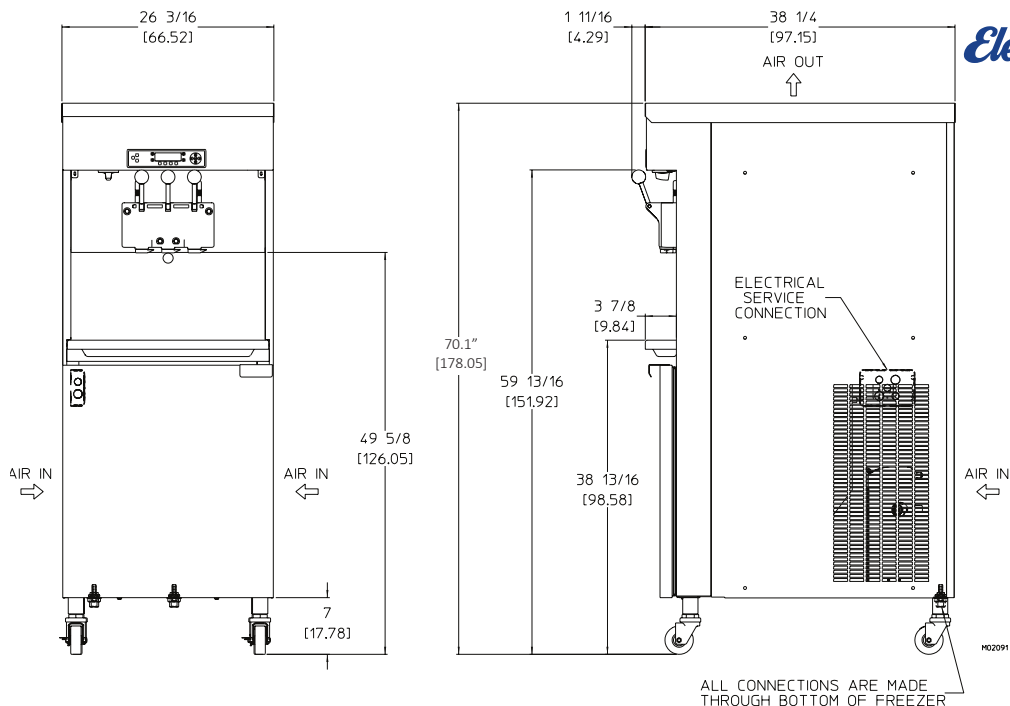


Self Closing Spigots
prevents the mess and
eliminates waste.

Optional Door Latch

Scroll Compressor Technology
provides increased
capacity, reliability and
efficiency.

GES-5400 Soft Serve Freezer



Electro Freeze®

MODEL GES-5400 SPECIFICATIONS

Due to continual product improvements all specifications are subject to change without notice.

Weights	lbs.	kgs.		
Net	914	414		
Crated	995	460		
	cu.ft.	cu.m.		
Volume	58.42	1.65		
Dimensions	in.	cm		
Width	26-3/16	66.52		
Depth	38-1/4	97.15		
Height	70.1	178.05		
Electrical	Maximum	Minimum	Circuit	NEMA
	Fuse Size	Ampacity	(Qty)	Plug Type
	208-230/60/1 Air	35 (2)	29 (2)	2P, 2W
	208-230/60/1 Water	35 (2)	27.5 (2)	2P, 2W
	208-230/60/3 Air	25 (2)	20 (2)	3P, 3W
	208-230/60/3 Water	25 (2)	19 (2)	3P, 3W

Electrical characteristics other than above available on request from factory or local distributor. Check nameplate for exact electrical data.

Bidding Spec

Electrical: Volt _____ Hz _____ Ph _____

Cooling: _____ Neutral _____ Yes _____ No

Options: _____

Electrical

A dedicated electrical connection is required. Manufactured to be permanently connected. See electrical chart for the proper requirement. Consult your local electrical codes for cord and receptacle specifications.

Beater Motor

Two, 2hp.

Refrigeration Systems

Two, 19,000 Btuh. R404a.

Separate Cabinet Refrigeration, One, 1200 Btuh, R134a. Btuh may vary depending on compressor used.

Air Cooled

For proper air circulation, unit requires 6" (15.2 cm) air space at rear panel or 6" side clearance with 1" back and 29" top clearance.

Mix Capacity: 2 tanks - 24 quarts (22.7 liters) ea.

Freezing Cylinder Capacity: two - 5 quarts (4.7 liters) each

Certified and/or listed by:



*UL listed and listed by Underwriters Laboratories under Canadian National Standard C22.2 No. 120-13



- TASTE THE DIFFERENCE -

MODEL GEN-5420

This pressurized soft serve freezer dispenses two separate mixes, allowing multiple crew members to pull product at the same time. The pressurized machines are excellent for high butterfat mixes like custard, lowfat and premium ice cream. Perfect for high-volume college & university cafeterias, restaurants, ice cream shops and stadium concessionaires.

The Electro Freeze Advantage

- **Patented Mix Transfer System*** simplest and most reliable pressurized system available.
- **Flexible Mix Holding System Pumps** directly from bags or from mix containers
- **Innovative Solutions** providing the Best product quality in the industry.
- **Meets ADA Specifications** for self service applications
- **Precision dual Smart control monitors** Temperature and Consistency to provide superior taste and quality.
- **Multi-function LED display** with manager smart tools.
- **The Finest Frozen Product**, consistently the best frozen product available. Smooth, creamy and profitable.
- **Self Closing Spigots** prevents the mess and eliminates waste
- **Exclusive Auger Design** Superior low temperature refrigeration system provides the best in class production and product quality.
- **Energy Conservation Mode** reduces energy cost and holds product safely during non-business hours
- **Superior Low Temperature Refrigeration System** provides the best in class production and product quality
- **Scroll Compressor Technology** provides increased capacity, reliability and efficiency.

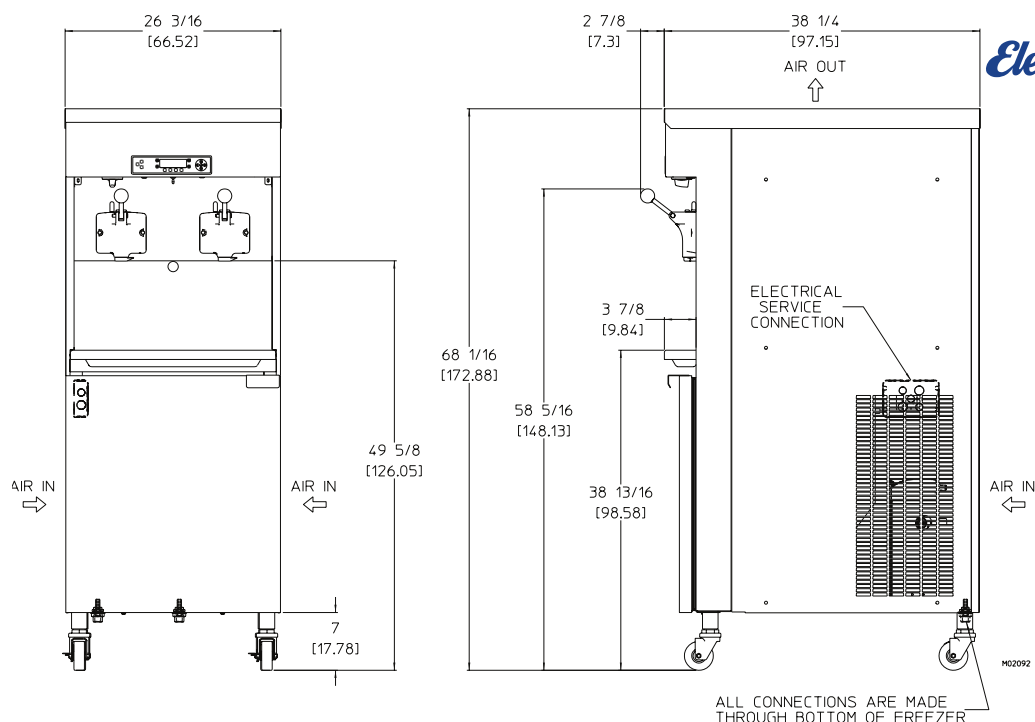
SOFT SERVE FREEZER GENESIS SERIES™ featuring


VQM™
Virtual Quality
Management System™



**Let VQM help manage your frozen
dessert business more effectively.**

GEN-5420 Soft Serve Freezer



MODEL GEN-5420 SPECIFICATIONS

Due to continual product improvements all specifications are subject to change without notice.

Weights	lbs.	kgs.		
Net	847	384		
Crated	993	450		
	cu.ft.	cu.m.		
Volume	58.42	1.65		
Dimensions	in.	cm		
Width	26-3/16	66.52		
Depth	38-1/4	97.15		
Height	68-1/16	172.88		
Electrical	Maximum Fuse Size	Minimum Ampacity (Qty)	NEMA Plug Type	
	208-230/60/1 Air	35 (2)	29 (2)	2P, 2W
	208-230/60/1 Water	35 (2)	27.5 (2)	2P, 2W
	208-230/60/3 Air	25 (2)	20 (2)	3P, 3W
	208-230/60/3 Water	25 (2)	19 (2)	3P, 3W

Electrical characteristics other than above available on request from factory or local distributor. Check nameplate for exact electrical data.

Bidding Spec

Electrical: Volt _____ Hz _____ Ph _____

Cooling: _____ Neutral _____ Yes _____ No

Options: _____

Electrical

Two dedicated electrical connections are required. Manufactured to be permanently connected. See electrical chart for the proper requirement. Consult your local electrical codes for cord and receptacle specifications.

Beater Motor

Two, 2hp.

Refrigeration Systems

Two, 19,000 Btuh. R404a.
Separate Cabinet Refrigeration, One, 1200 Btuh, R134a.
Btuh may vary depending on compressor used.

Air Cooled

For proper air circulation, unit requires 6" (15.2 cm) air space at rear panel or at both side panels and 24" (61 cm) air space above unit.

Mix Hopper Capacity: two - 26 quarts (24.6 liters) each

Freezing Cylinder Capacity: two - 5 quarts (4.7 liters) each

Certified and/or listed by:



*UL listed and listed by Underwriters Laboratories under Canadian National Standard C22.2 No. 120-13



- TASTE THE DIFFERENCE -

MODEL GEN-5400

This extreme-volume 2-flavor soft serve freezer is perfect for serving lots of product in a short amount of time! Features the GEN-5400 Genesis Series™ with the Virtual Quality Management System™ to streamline your business. Includes a front-loading refrigerated cabinet with a high speed pump. Our pressurized machines consistently produce smooth and creamy high and low fat products like ice cream, custard, yogurt and sorbets. Excellent for full-menu ice cream and custard stores, sports arenas & stadiums.

The Electro Freeze Advantage

- **Virtual Quality Management System™** monitors Temperature and Consistency to provide superior taste and quality.
- **Patented Mix Transfer System*** simplest and most reliable pressurized system available.
- **Flexible Mix Holding System Pumps** directly from bags or from mix containers
- **Innovative Solutions** providing the Best product quality in the industry.
- **Meets ADA Specifications** for self service applications
- **Multi-function LED** display with manager smart tools.
- **The Finest Frozen Product**, consistently the best frozen product available. Smooth, creamy and profitable.
- **Self Closing Spigots** prevents the mess and eliminates waste
- **Exclusive Auger Design** Superior low temperature refrigeration system provides the best in class production and product quality.
- **Energy Conservation Mode** reduces energy cost and holds product safely during non-business hours
- **Superior Low Temperature Refrigeration System** provides the best in class production and product quality
- **Scroll Compressor Technology** provides increased capacity, reliability and efficiency.

SOFT SERVE FREEZER GENESIS SERIES™

2 Flavor Twist

featuring



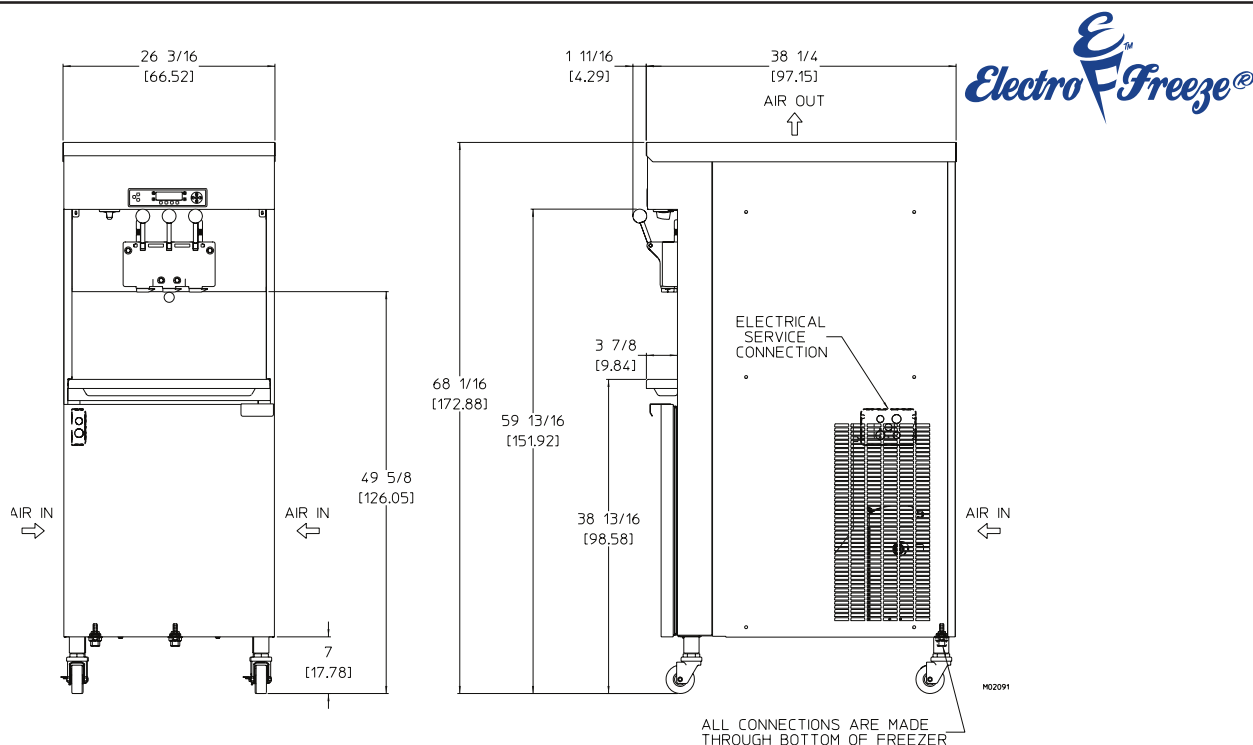
VQM™

**Virtual Quality
Management System™**



**Let VQM help manage your frozen
dessert business more effectively.**

GEN-5400 Soft Serve Freezer



MODEL GEN-5400 SPECIFICATIONS

Due to continual product improvements all specifications are subject to change without notice.

Weights	lbs.	kgs.	
Net	914	414	
Crated	1015	460	
	cu.ft.	cu.m.	
Volume	58.42	1.65	
Dimensions	in.	cm	
Width	26-3/16	66.52	
Depth	38-1/4	97.15	
Height	68-1/16	172.88	
Electrical	Maximum Fuse Size	Minimum Circuit Ampacity (Qty)	NEMA Plug Type
208-230/60/1 Air	35 (2)	29 (2)	2P, 2W
208-230/60/1 Water	35 (2)	27.5 (2)	2P, 2W
208-230/60/3 Air	25 (2)	20 (2)	3P, 3W
208-230/60/3 Water	25 (2)	19 (2)	3P, 3W

Electrical characteristics other than above available on request from factory or local distributor. Check nameplate for exact electrical data.

Bidding Spec

Electrical: Volt _____ Hz _____ Ph _____

Cooling: _____ Neutral _____ Yes _____ No

Options: _____

Electrical

A dedicated electrical connection is required. Manufactured to be permanently connected. See electrical chart for the proper requirement. Consult your local electrical codes for cord and receptacle specifications.

Beater Motor

Two, 2hp.

Refrigeration Systems

Two, 19,000 Btuh. R404a.

Separate Cabinet Refrigeration, One, 1200 Btuh, R134a. Btuh may vary depending on compressor used.

Air Cooled

For proper air circulation, unit requires 6" (15.2 cm) air space at rear panel or at both side panels and 24" (61 cm) air space above unit.

Mix Hopper Capacity: two - 24 quarts (22.2 liters) each

Freezing Cylinder Capacity: two - 5 quarts (4.7 liters) each

Certified and/or listed by:



*UL listed and listed by Underwriters Laboratories under Canadian National Standard C22.2 No. 120-13



- TASTE THE DIFFERENCE -

MODEL GEN-5099

This pressurized, 2-flavor twist soft serve machine produces the highest quality, most consistent and profitable product you can serve. Ideal for operators that want to serve a high-quality product but don't require huge volume. This machine is perfect for co-branding concepts as well as college cafeterias, buffets and adding additional flavors to any shops.

The Electro Freeze Advantage

- **Virtual Quality Management System™** monitors Temperature and Consistency to provide superior taste and quality.
- **Patented Mix Transfer System*** simplest and most reliable pressurized system available.
- **Flexible Mix Holding System Pumps** directly from bags or from mix containers
- **Innovative Solutions** providing the Best product quality in the industry.
- **Meets ADA Specifications** for self service applications
- **Multi-function LED** display with manager smart tools.
- **The Finest Frozen Product**, consistently the best frozen product available. Smooth, creamy and profitable.
- **Self Closing Spigots** prevents the mess and eliminates waste
- **Exclusive Auger Design** Superior low temperature refrigeration system provides the best in class production and product quality.
- **Energy Conservation Mode** reduces energy cost and holds product safely during non-business hours
- **Superior Low Temperature Refrigeration System** provides the best in class production and product quality
- **Scroll Compressor Technology** provides increased capacity, reliability and efficiency.

PRESSURIZED SOFT SERVE FREEZER

GENESIS

2 Flavor Twist featuring

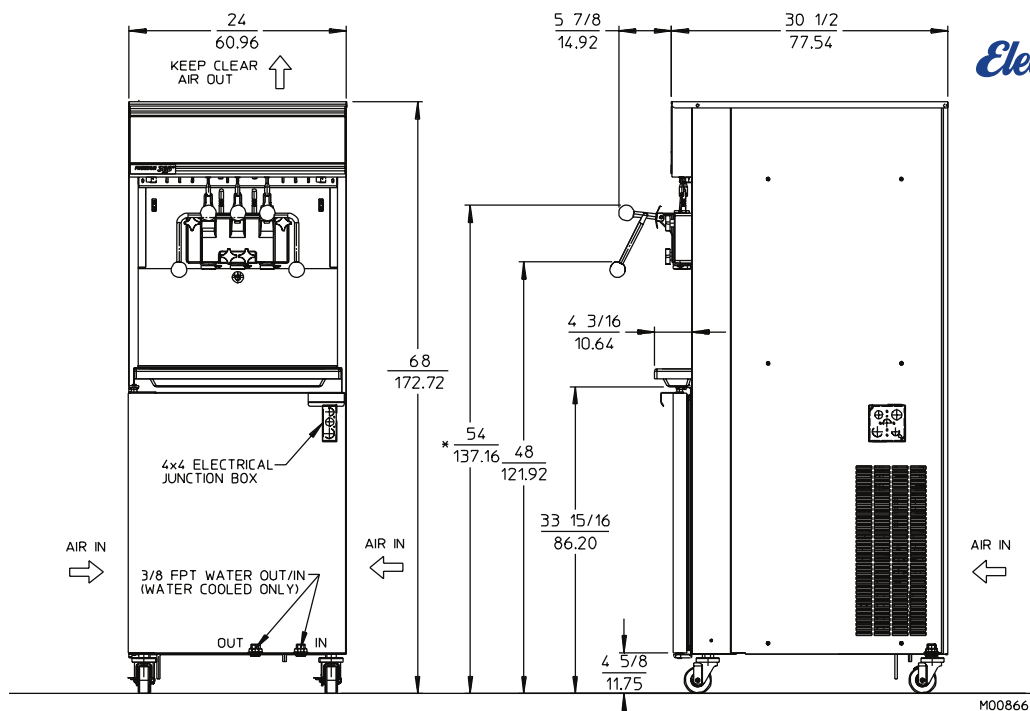
FVQM™

**Virtual Quality
Management System™**



**Let VQM help manage your frozen
dessert business more effectively.**

GEN-5099 Soft Serve Freezer



MODEL GEN-5099 SPECIFICATIONS

Due to continual product improvements all specifications are subject to change without notice.

Weights	lbs.	kgs.	
Net	653	296	
Crated	709	321	
	cu.ft.	cu.m.	
Volume	58.42	1.65	
Dimensions	in.	cm	
Width	24	60.96	
Depth	30-1/2	77.54	
Height	68	172.72	
Electrical	Maximum Fuse Size	Minimum Circuit Ampacity (Qty)	NEMA Plug Type
208-230/60/1 Air	45	38.0	2P, 2W
208-230/60/1 Water	45	36.5	2P, 2W
208-230/60/3 Air	30	28	3P, 3W
208-230/60/3 Water	30	26.5	3P, 3W
	Total Amps (Qty)	kW	Poles (P) Wires (W)
400/50/3 Air	14.7	6.1	3P 4W
400/50/3 Water	13.3	5.8	3P 4W

Electrical characteristics other than above available on request from factory or local distributor. Check nameplate for exact electrical data.

Bidding Spec

Electrical: Volt _____ Hz _____ Ph _____

Cooling: _____ Neutral _____ Yes _____ No

Options: _____

Electrical

A dedicated electrical connection is required. Manufactured to be permanently connected. See electrical chart for the proper requirement. Consult your local electrical codes for cord and receptacle specifications.

Beater Motor

Two, 2hp.

Refrigeration Systems

One, 12,000 Btuh. R404a.

Separate Cabinet Refrigeration, One, 1000 Btuh, R134a. Btuh may vary depending on compressor used.

Air Cooled

For proper air circulation, unit requires 6" (15.2 cm) air space at rear panel or at both side panels and 24" (61 cm) air space above unit.

Arrange installation & repair through established distributors.

Mix Hopper Capacity: two - 22 quarts (20.8 liters) each

Freezing Cylinder Capacity: two - 3.7 quarts (3.5 liters) each

Certified and/or listed by:



*UL listed and listed by Underwriters Laboratories under Canadian National Standard C22.2 No. 120-13



- TASTE THE DIFFERENCE -

MODEL CS600

This high-volume, single-flavor counter model soft serve freezer is easy to operate and simple to clean. The CS600 provides menu flexibility for convenience stores, specialty buffets, airport kiosks, burger restaurants, diners and ice cream stores.

The Electro Freeze Advantage

- **The Finest Frozen Product** consistently the best frozen product available. Smooth, creamy and profitable
- **Patented auger** gently blends reducing agitation and maintaining product quality and consistency.
- **Consistency Control** designed to dispense the finest frozen product available
- **Air Filter** washable filter keeps the condenser clean
- **Compact design** with a small foot print.
- **Experience Tells** Electro Freeze has been manufacturing quality frozen treat machines since 1929. Superior engineering, product innovations, sturdy construction, quality craftsmanship and dependable performance are Electro Freeze hallmarks.
- **Superior Service Support** backed by a worldwide distributor network

Optional

- **Top Air Discharge Chute** the top air discharge chute on air cooled models allows units to be set side by side and air flow to be diverted up.
- **Cabinet** an optional commercial grade stainless steel cabinet is available includes heavy duty casters, a sturdy latch and gives you 6 cubic feet of storage.

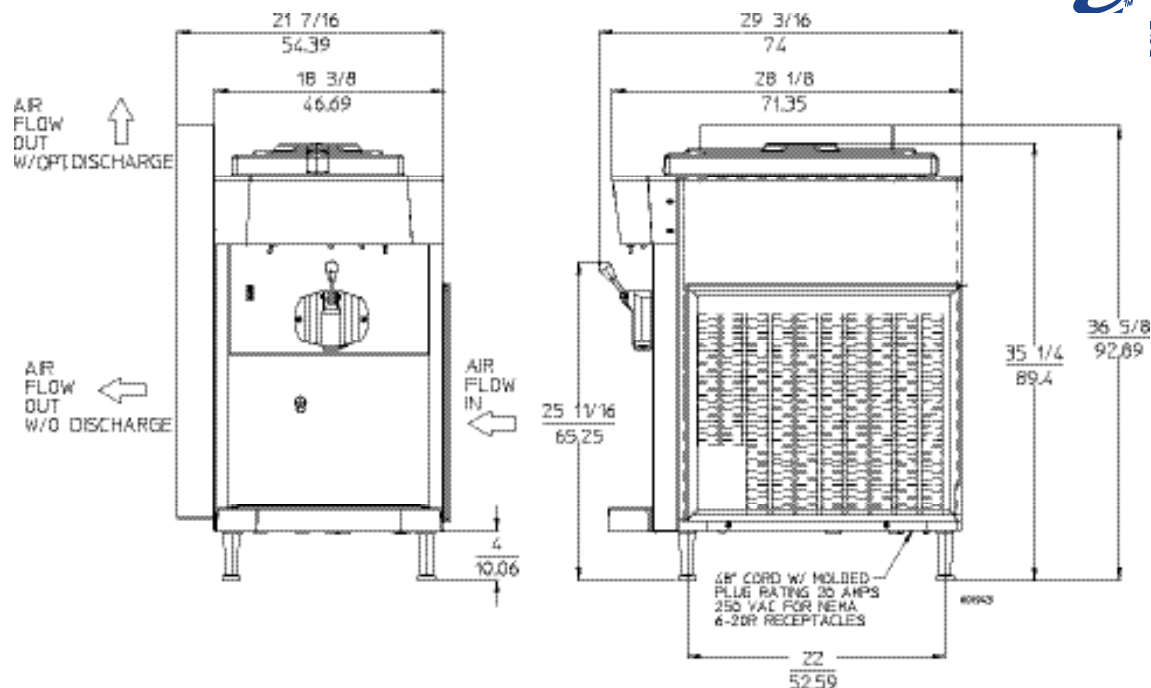
GRAVITY SOFT SERVE FREEZER

Compact Series

Single Flavor



CS600 Soft Serve Freezer



MODEL CS600 SPECIFICATIONS

Due to continual product improvements all specifications are subject to change without notice.

Weights	lbs.	kgs.
Net	294	134
Crated	390	177
	cu.ft.	cu.m.
Volume	39.5	1.2
Dimensions	in.	cm
Width	18-7/16	46.83
Depth	28-1/8	71.44
Height	35-1/4	89.56

Electrical	Maximum Fuse Size	NEMA Plug Type
208-230/60/1 Air	20	6-20P
208-230/60/1 Water	20	6-20P
	Total Amps (Qty)	kW
220-240/50/1 Air	12	1.78
	Poles (P)	Wires (W)
	2P	2W

Electrical characteristics other than above available on request from factory or local distributor. Check nameplate for exact electrical data.

Bidding Spec

Electrical: Volt _____ Hz _____ Ph _____

Cooling: _____ Neutral _____ Yes _____ No

Options: _____

Electrical

One dedicated electrical connection is required. 60 Hertz units connect to a standard NEMA 6-20R receptacle. See electrical chart for the proper requirement. Consult your local electrical codes for receptacle specifications.

Beater Motor

One, 1.5 hp.

Refrigeration Systems

One, 9,500 Btuh. R404a.
Btuh may vary depending on compressor used.

Air Cooled

3" (7.6 cm) air space required on sides and behind rear panel for proper air circulation

Mix Hopper Capacity: one - 20 quarts (18.8 liters) each

Freezing Cylinder Capacity: one - 3.7 quarts (3.5 liters) each

Certified and/or listed by:



*UL listed and listed by Underwriters Laboratories under Canadian National Standard C22.2 No. 120-13

**Selected voltages only. Contact H.C. Duke to verify agency needs.



- TASTE THE DIFFERENCE -

MODEL 44RMTFB

This pressurized, 9 flavor soft serve machine delivers valuable menu flexibility in a small footprint. By fully incorporating the flavor in every bite of soft serve, this freezer produces the highest quality, most consistent and profitable product you can serve. Simply press a button to select flavors! The easy-to-operate features include: easy syrup adjustments, one button flavor selection and no complicated attachments. This machine is perfect for high volume establishments wanting to serve superior-quality, smooth and creamy ice cream, frozen yogurt or gelato. Great for co-branding concepts as well as college cafeterias, buffets and adding additional flavors to any shops.

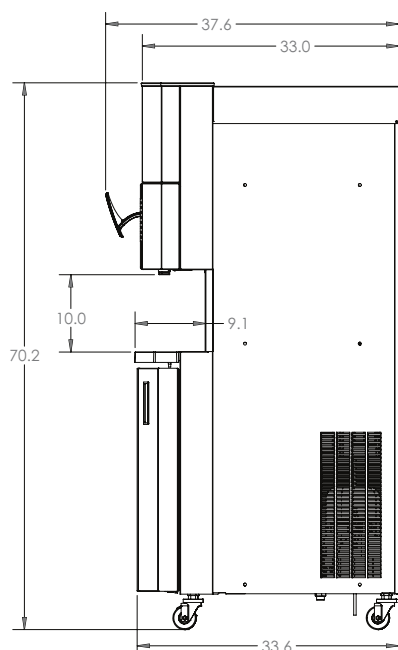
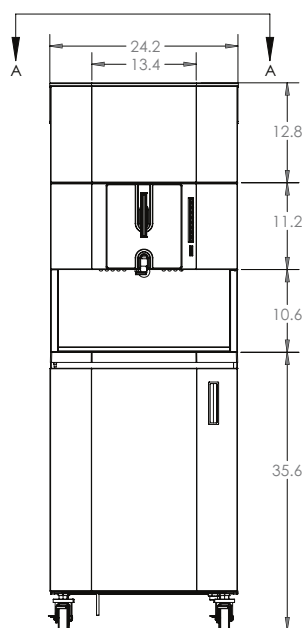
The Electro Freeze Advantage

- **9 Flavors To Choose From** contained in 32oz. syrup containers located in the cabinet. Dispense the base product alone or press a button to infuse the product with one of 8 additional flavors.
- **The Finest Frozen Product**, consistently the best frozen product available. Smooth, creamy and profitable
- **Product Flexibility** serves a variety of frozen products, custard, ice cream sorbets, water ice or yogurt
- **Flexible Mix Holding System** pumps directly from bags or from mix containers
- **Patented Mix Transfer System*** simplest and most reliable pressurized system available
- **Self Closing Spigots** prevents the mess and eliminates waste
- **Exclusive Auger Design** gently blends, reducing agitation, maintaining product quality and consistency.
- **Energy Conservation Mode** reduces energy cost and holds product safely during non-business hours
- **Superior Low Temperature Refrigeration System** provides the best in class production and product quality
- **Experience Tells** Electro Freeze has been manufacturing quality frozen treat machines since 1929.

PRESSURIZED SOFT SERVE FREEZER 9 Flavor Fuzionate



44RMTFB Fuzionate™ Freezer



Model 44RMTFB Specifications

Due to continual product improvements all specifications are subject to change without notice.

Weights	lbs.	kgs.	
Net	652	296	
Crated	704	320	
	cu.ft.	cu.m.	
Volume	58.42	1.65	
Dimensions	in.	cm	
Width	24.2	61.5	
Depth	33	83.8	
Height	70.2	178.3	
Electrical	Maximum Fuse Size	Minimum Circuit Ampacity	Poles (P) Wires (W)
208-230/60/3 Air	20	20	3P, 3W
208-230/60/3 Water	20	19	3P, 3W
208-230/60/1 Air	30	27	2P, 2W
208-230/60/1 Water	30	25	2P, 2W
	Total Amps	kW	Poles (P) Wires (W)
380-415/50/3 Air	11.5	4.5	3P, 4W
Electrical characteristics other than above available on request from factory or local distributor. Check nameplate for exact electrical data.			

Electrical characteristics other than above available on request from factory or local distributor. Check nameplate for exact electrical data.

Bidding Spec

Electrical: Volt _____ Hz _____ Ph _____

Cooling: _____ Neutral _____ Yes _____ No

Options: _____

Electrical

One dedicated electrical connection is required. Manufactured to be permanently connected. See electrical chart for the proper requirement. Consult your local electrical codes for cord and receptacle specifications.

Beater Motor

One, 2 hp.

Refrigeration Systems

One, 6,700 Btuh. R404a.
Separate Cabinet Refrigeration, One, 1200 Btuh, R134a.
Btuh may vary depending on compressor used.

Exterior Space Required

Water Cooled - 3" (7.6 cm) air space required on both sides and the rear panel for proper air circulation.

Air Cooled - 6" (15.3 cm) air space required on both sides and the rear panel for proper air circulation.

Potable Water Connection (For rinse line): 3/8" FPT

Freezing Cylinder Capacity: one - 3.7 quart (3.5 liters)

Syrup Capacity: eight - 32oz. (.95 liters) syrup bottles

Certified and/or listed by:



*UL listed and listed by Underwriters Laboratories under Canadian National Standard C22.2 No. 120-M91(R2008)



По вопросам продаж и поддержки обращайтесь:

Алматы (727)345-47-04
Ангарск (3955)60-70-56
Архангельск (8182)63-90-72
Астрахань (8512)99-46-04
Барнаул (3852)73-04-60
Белгород (4722)40-23-64
Благовещенск (4162)22-76-07
Брянск (4832)59-03-52
Владивосток (423)249-28-31
Владикавказ (8672)28-90-48
Владимир (4922)49-43-18
Волгоград (844)278-03-48
Вологда (8172)26-41-59
Воронеж (473)204-51-73
Екатеринбург (343)384-55-89

Иваново (4932)77-34-06
Ижевск (3412)26-03-58
Иркутск (395)279-98-46
Казань (843)206-01-48
Калининград (4012)72-03-81
Калуга (4842)92-23-67
Кемерово (3842)65-04-62
Киров (8332)68-02-04
Коломна (4966)23-41-49
Кострома (4942)77-07-48
Краснодар (861)203-40-90
Красноярск (391)204-63-61
Курск (4712)77-13-04
Курган (3522)50-90-47
Липецк (4742)52-20-81

Магнитогорск (3519)55-03-13
Москва (495)268-04-70
Мурманск (8152)59-64-93
Набережные Челны (8552)20-53-41
Нижегород (831)429-08-12
Новокузнецк (3843)20-46-81
Ноябрьск (3496)41-32-12
Новосибирск (383)227-86-73
Омск (3812)21-46-40
Орел (4862)44-53-42
Оренбург (3532)37-68-04
Пенза (8412)22-31-16
Петрозаводск (8142)55-98-37
Псков (8112)59-10-37
Пермь (342)205-81-47

Ростов-на-Дону (863)308-18-15
Рязань (4912)46-61-64
Самара (846)206-03-16
Санкт-Петербург (812)309-46-40
Саратов (845)249-38-78
Севастополь (8692)22-31-93
Саранск (8342)22-96-24
Симферополь (3652)67-13-56
Смоленск (4812)29-41-54
Сочи (862)225-72-31
Ставрополь (8652)20-65-13
Сургут (3462)77-98-35
Сыктывкар (8212)25-95-17
Тамбов (4752)50-40-97
Тверь (4822)63-31-35

Тольятти (8482)63-91-07
Томск (3822)98-41-53
Тула (4872)33-79-87
Тюмень (3452)66-21-18
Ульяновск (8422)24-23-59
Улан-Удэ (3012)59-97-51
Уфа (347)229-48-12
Хабаровск (4212)92-98-04
Чебоксары (8352)28-53-07
Челябинск (351)202-03-61
Череповец (8202)49-02-64
Чита (3022)38-34-83
Якутск (4112)23-90-97
Ярославль (4852)69-52-93

Россия +7(495)268-04-70

Казахстан +7(727)345-47-04

Беларусь +(375)257-127-884

Узбекистан +998(71)205-18-59

Киргизия +996(312)96-26-47

эл.почта: eze@nt-rt.ru || сайт: <http://electrofreeze.nt-rt.ru/>